



Price Merrett Consulting PTY.LTD.
CONSULTING SURVEYORS, ENGINEERS, IRRIGATION DESIGNERS A.C.N. 006 354 427

Company Profile

2009

Price Merrett Consulting Pty. Ltd. Is a multidisciplinary company specialising in Land Surveying, Civil and Environmental Engineering and Natural Resource Management. The business has grown steadily in size and stature since 1980, with offices now established in Kerang, Swan Hill, Murray Bridge. The current staff level is 19 full time professional and clerical employees.

Price Merrett Consulting provides services in the fields of:

- ✦ Irrigation management
- ✦ Land development
- ✦ Soil Surveys and Land Use Capability Surveys
- ✦ Topographic and Engineering Surveying
- ✦ Cadastral Surveying- Land Subdivision, Easements & Title Re-establishment (Vic & NSW)
- ✦ Civil and Environmental Engineering
- ✦ Geotechnical investigating
- ✦ Contract Management
- ✦ Town Planning
- ✦ Natural Resource Management
- ✦ Environmental Science

Price Merrett Consulting's knowledge and experience can provide continuity of projects from feasibility studies and investigations through to the final inspections of the completed works.

In addition to the "in house" consultancies offered, the Company maintains close links with specialist consultants in the design, construction and agricultural industries, and is able to quickly put together a full consultant team for even the most complex development.

Price Merrett Consulting is a member of:

- ✦ The Institution of Surveyors, Australia
- ✦ The Association of Consulting Surveyors
- ✦ The Institution of Engineers, Australia
- ✦ Irrigation Australia
- ✦ Irrigation Surveyors and Designers Group



Price Merrett Consulting head office, situated in Kerang, Administrative, Irrigation, Horticultural development and Civil Engineering Areas are all based here. Mr. Philip



Price is in attendance at this office. The Engineering Department is managed by Mr Mark Carter.

Mr. Robert Merrett manages our Swan Hill office and specialises in general cadastral, town planning and land development projects. Kerang and Swan Hill staff.

Ms Monique White manages our Murray Bridge office and specialises in Natural Resource and Environmental Management projects.

The appointment of a General Manager allows the working Directors and support staff to concentrate on technical aspects of contract performance. Both Directors are well equipped to handle enquiries on all matters, however, in these times of ever increasing Government laws and regulations, together with new technology, specialisation in a particular field is necessary. We feel that specialist involvement gives the client greater protection and security.

PROFESSIONAL DEVELOPMENT

Our professional approach and commitment to continuing education and the use of the latest technology have resulted in our leadership in the field of Irrigation Design, Land Development and Natural Resource Studies. Fully equipped four-wheel drive vehicles, including all terrain 4WD's are maintained. We use only the most up to date precision optical and electronic surveying instruments. Total Stations and GPS (satellite surveying) gives us the ability to carry out the most complicated surveys in the shortest time.

The use of Microstation, ArcView GIS, Civil CAD and AutoCAD Software, along with supporting CAD hardware, enables accurate computer drawn plans to be produced as either hard copy or in electronic format.

Continuing education in the fields of soil science and irrigation scheduling ensure our expertise in every facet of irrigation and earthworks construction.

We are continually expanding the consultancy services offered within the engineering section through staff development and training. We strongly encourage our staff to undertake external courses and seminars to maintain and advance their individual skills within various facets of our engineering, surveying and environmental services on offer.

COMMERCIAL INFORMATION



COMPANY NAME: Price Merrett Consulting Pty Ltd.

A.B.N. : 15.073.392.491

DATE OF INCORPORATION: 28th July 1980

STATE OF INCORPORATION: Victoria

COMPANY STRUCTURE: Trustee company for the Price Merrett and Associates Unit Trust. A discretionary trust with units held by two working directors.

DIRECTORS:

Mr. Philip Raymond Price
Licensed Surveyor
2 Nugget Street
Kerang, Victoria 3579

Mr. Robert Gregory Merrett
Surveyor
175 Gray Street
Swan Hill, Victoria 3585

FINANCIAL STANDING



BANK: National Australia Bank
Kerang Branch
Phone :(03) 5452 1422

ACCOUNTANT: Dodgshun Medlin
348 Campbell Street, Swan Hill
Phone (03) 5032 9888

INSURANCE: Public Liability Insurance
Commercial Union Insurance
Policy Number: 15T 8339685 08
Limit \$20,000,000

Professional Indemnity Insurance
ACSIS Ltd.
Policy Number: A07970533PID
Certificate Number Q54527
Limit \$10,000,000

Workcover Registration Number - Victoria
Employer Number 1211490
Workcover Registration Number – South Australia
Employer Number E20562208



LOCATION OF OFFICES

Head Office: **Kerang - Victoria**

9478 Murray Valley Highway,
P.O. Box 313
KERANG VIC 3579

Phone: 03 5452 2490
Fax: 03 5452 2566
E-mail: pmc@pricemerrett.com.au

Web Site: www.pricemerrett.com.au

Fully Staffed Offices: **Swan Hill - Victoria**

69 Beveridge Street
P.O Box 1172
SWAN HILL VIC 3585

Phone: 03 5032 3685
Fax: 03 50 322 472
Email: pmash@pricemerrett.com.au

Murray Bridge – South Australia

The Natural Resources Management Centre
Mannum Road
MURRAY BRIDGE SA 5253

Phone: 0439 815 844
Fax: 08 8531 1843



PRICE MERRETT CONSULTING OFFERS THE FOLLOWING SERVICES

SURVEY STUDIES

- ✚ Topographic surveys
- ✚ Cadastral surveys- Land Subdivision, Easement & Title Re-establishment
- ✚ Drain and channel remodeling surveys
- ✚ G.P.S. real time and control surveys.
- ✚ River and waterway surveys
- ✚ GIS mapping
- ✚ Pipeline surveys
- ✚ Road surveys

GEOTECHNICAL STUDIES

- ✚ Soil profile for engineering or agricultural purposes.
- ✚ Soil assessment for agricultural and construction purposes.
- ✚ Land Capability Assessments

CONSULTATION AND MANAGEMENT

- ✚ Contract development and management
- ✚ Project management
- ✚ Liaison with local authorities and service providers
- ✚ Liaison with customers/customer groups

FARM AND IRRIGATION DESIGN

- ✚ Whole farm planning
- ✚ Digital terrain modeling
- ✚ Innovative Irrigation development assessment / potential
- ✚ Soil type and groundwater investigation
- ✚ Remodeling existing layouts
- ✚ Earthworks calculations



ENGINEERING DESIGN

- ✚ Subdivision infrastructure design.
- ✚ Earthworks design.
- ✚ Irrigation structure design.
- ✚ Rural & urban road design.
- ✚ Drainage design.
- ✚ Pipelines - gravity and pressure.
- ✚ Water & sewerage reticulation design.
- ✚ Small irrigation structures.

REPORTS AND STUDIES

- ✚ Floodplain and Catchment Management Studies.
- ✚ Natural Resource Management Studies.
- ✚ Geotechnical assessment for large earthworks.
- ✚ Project feasibility studies.

CONFIDENTIALITY OF INFORMATION

Price Merrett Consulting Pty Ltd recognizes the importance of sustaining confidentiality of information by clients and others. In doing so this matter has been addressed in the Company's Quality Manual which forms Company Policy and direction. Refer PMC QM - 001 5.1.1 and quote:-

"All client information is to remain the property of the company and must be kept strictly confidential. Requests for release of part or all of this information will only be given to a third party upon written consent from the client concerned. Documents and any written client information must be stored in a closed fire - proof cabinet within the office confines when not being used."

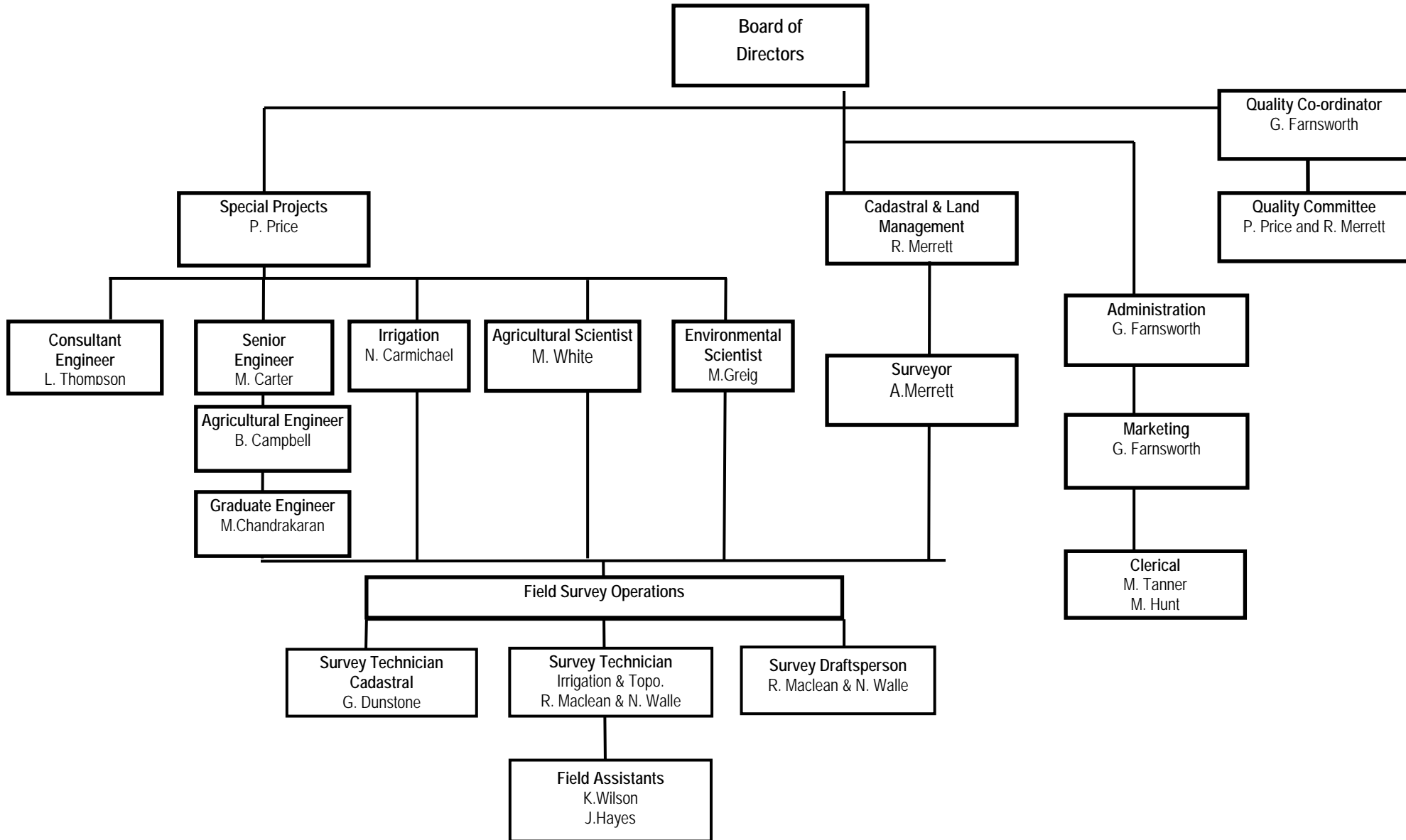
MANAGEMENT CAPABILITIES:

Refer to the company's personnel resources and structure diagram. The company employs a dedicated Office Manager who has no technical responsibilities. This allows the Directors to concentrate on their respective specialities.



ORGANISATION STRUCTURE

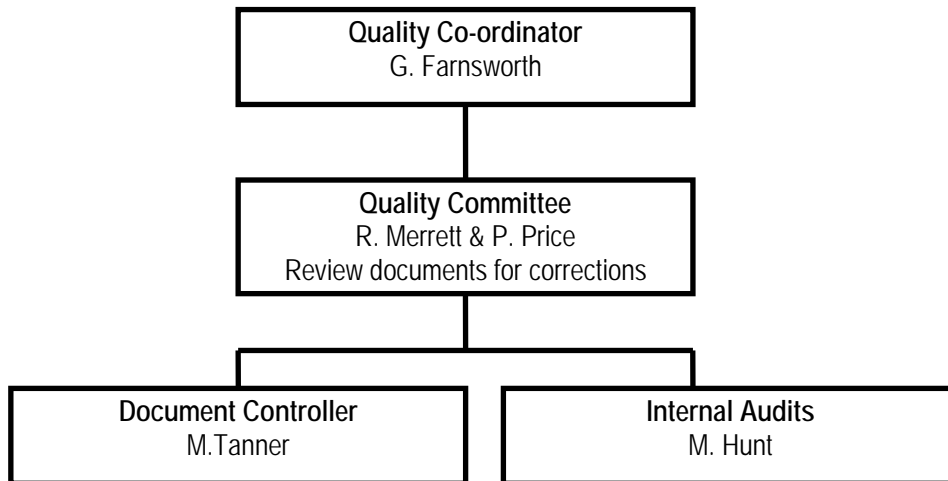
The diagram below sets out the organisation structure for Price Merrett Consulting Pty Ltd.



ORGANISATION STRUCTURE (cont'd)

The diagram below sets out the organisation chart for the Quality Assurance function for Price Merrett Consulting Pty Ltd.

Should both the person assigned to the position and the nominee be unavailable, the responsibility for the position shall revert to the next highest supervisory position as shown in the organisation chart.



STAFF PROFILES

PHILIP PRICE

POSITION: Company Director & Licensed Surveyor

QUALIFICATIONS: Bachelor Applied Science (Surveying) with distinction. (1974)

Licensed Surveyor (Victoria). Since 1977

Registered Surveyor (New South Wales). Since 1984

Certified Irrigation Designer (Ag. Surface) (2000)

Diploma of Irrigation (2006)

PROFESSIONAL ASSOCIATIONS:

- Corporate Member of Institute of Surveyors, Australia.
- Associate Member Association of Consulting Surveyors.
- Member of The Australian Institute of Agricultural Science and Technology.
- Member of Society of Soil Science Incorporated
- Member Irrigation Association of Australia:
 - Victorian Regional Committee 1986 - 1992
 - National Irrigation Education Committee 1989 - 1992
 - National Irrigation Management Group 1988 - 1991.
 - National Certification Board Member 2003 - 2007
- Life Member Irrigation Surveyors and Designers Group:
 - Secretary 1986 - 1988
 - President 1994 - 1996, 2008-2009.

FIELDS OF SPECIAL COMPETENCE:

- Soil Surveying
- Major reticulation pipelines
- Whole farm plan designs, including earthworks and farm management systems
- Land layout including channel, dam and pump systems
- Project planning and management
- Contract management
- Wastewater and drainage systems design
- Community surface drainage
- G.P.S. surveys (baseline to real time kinematics)
- Levee, drain, and pipeline surveys.
- Roadworks - survey and design
- Natural Resource management Projects
- Sprinkler irrigation system design
- Hydro graphic surveys



ROBERT MERRETT

POSITION: **Company Director & Surveyor**

QUALIFICATIONS: Bachelor of Applied Science (Surveying)

PROFESSIONAL ASSOCIATIONS:

- Corporate Member of Institution of Surveyors, Australia.
- Associate Member of Association of Consulting Surveyors.

FIELDS OF SPECIAL COMPETENCE:

- Cadastral surveying under relevant Australian Acts of Parliament.
- Geodetic Surveying
- Town Planning.
- Engineering surveying specialising in accurate setout for pipelines, boreholes, buildings, bridgeworks, roadworks and levees.
- Experienced in irrigation surveying and design.
- Office Management.
- Implementation of Quality Assurance Procedure
- Client contract and negotiations with authorities on client's behalf.

PROFESSIONAL EXPERIENCE:

August 1983 - Present: Director of Price Merrett & Associates Pty. Ltd. since 1985.

1975 – August 1983 Consulting Surveyor with Fisher and Dowell Pty. Ltd.,
Consulting Surveyors and Engineers in Swan Hill.

1972 – 1975 Surveyor with the Melbourne Board of Works and a further
period with the Victorian Railways.



LESLIE THOMPSON

POSITION: Engineer

QUALIFICATIONS: Diploma of Engineering (Civil) 1972

Engineer of Water Supply 1977

FIELDS OF SPECIAL COMPETENCE:

- Operation, maintenance, and management of pumped and gravity irrigation systems
- Asset management
- Refurbishment of large irrigation systems
- Management of staff
- Irrigation investigations
- Project feasibility investigation
- Project management
- Contract management

PROFESSIONAL EXPERIENCE:

July 1995 - July 2003	Manager Asset Services Kerang Area Goulburn Murray Water
1989 - 1995	Engineer Planning Projects and Programs Goulburn Murray Water
1985 - 1989	District Engineer - Tongala Irrigation Area Goulburn Murray Water
1981 - 1985	District Engineer - Werribee Bacchus Marsh Irrigation Areas Goulburn Murray Water
1972 - 1981	Various engineering positions



MONIQUE WHITE

POSITION: Agricultural Scientist

QUALIFICATIONS: Bachelor of Agricultural Science (Honours)

CSIRO Honours scholarship

Graduate of the AICD Corporate Governance Course, including not-for-profit directorship and financial management.

FIELDS OF SPECIAL COMPETENCE:

- Project management & supervision
- Government policies, acts regulations and legislation regarding water management, environment, cultural and heritage
- Environmental Management Programs – industry and private
- Implementing water reform policies
- Development of wetlands projects.

PROFESSIONAL EXPERIENCE:

2005 - Present Price Merrett Consulting Pty Ltd

2004 – Mar 2005 **Safety and Environment Supervisor**
Dairyfarmers

1997 – 2004 **Program Coordinator / Executive Officer**
LMIAG (Lower Murray Irrigation Action Group)

1996 – 1997 **Project Officer**
LMIAG (Lower Murray Irrigation Action Group)

1995 – 1996 **Project Officer**
DEHAA (Department of Environment Heritage & Aboriginal Affairs)

1994 – 1995 **Project Officer**
SARDI (South Australian Research and Development Institute)



MICHAEL GREIG

POSITION: ENVIRONMENTAL CONSULTANT

QUALIFICATIONS: Batchelor of Science (Honours) - Rural Resource Development.
Specialising in Wildlife and Landscape Conservation.

Certificate in Environmental Impact Assessment

Currently studying Master of Science in Environmental
Management

PROFESSIONAL ASSOCIATIONS:

EIANZ- Environmental Institute of Aust. & NZ
Game Rangers Assoc. of Africa

FIELDS OF SPECIAL COMPETENCE:

- NRM Project Management & Planning
- Environmental Impact Assessments
- Sustainable Tourism Development
- Community facilitation and engagement
- Designing & Facilitating tailor made training courses
- Protected Area planning and management

PROFESSIONAL EXPERIENCE:

Present	Price Merrett Consulting Pty Ltd
2004- 2008	Sustainable Development Officer Loch Lamond & The Trossachs National Park Authority Balloch, Scotland.
2000- 2004	Environmental Consultant Ectocon Pty Ltd. Environmental Consultants Gaborone, Botswana
1997- 2000	National Park Management Advisor Earthplan Pty Ltd Lesotho
1994-1997	Park Ranger Mokolodi Wildlife Reserve South East District, Botswana



MARK CARTER

POSITION: **Senior Engineer**

QUALIFICATIONS: Batchelor of Environmental Engineering Degree (Honours)

PROFESSIONAL ASSOCIATIONS:

Member of the Institute of Engineers Australia

FIELDS OF SPECIAL COMPETENCE:

- Rural & urban road design
- Subdivision design
- Drainage design
- Geotechnical Investigations
- Planning and building approvals
- Contract development and management
- Project management
- Project supervision
- Hydrological investigations
- Earthworks design
- Water & sewer design

PROFESSIONAL EXPERIENCE:

2006 – Present: **Senior Engineer**
Price Merrett Consulting Pty. Ltd.

2004 – 2006 **Senior Engineer Assistant**
Stirling City Council. WA

2002 – 2004 **Environmental Engineer**
Price Merrett Consulting Pty. Ltd

2000 – 2002 **Graduate Engineer**
VicRoads



BARBARA CAMPBELL

POSITION: **Agricultural Engineer**

QUALIFICATIONS: Bachelor of Agricultural Engineering Degree (Honours)

FIELDS OF SPECIAL COMPETENCE:

- Irrigation design & research
- Land Capability Assessments
- Geotechnical Investigations
- Planning approvals
- Contract development and management
- Project management
- Report writing

PROFESSIONAL EXPERIENCE:

2005 – Present **Agricultural Engineer**
Price Merrett Consulting

1980 – 1988 **Research Engineer**
Rural Water Commission



GREG FARNSWORTH

POSITION: **General Manager**

FIELDS OF SPECIAL COMPETENCE:

- General Office Management
- Water Broker
- Accounting Systems
- Marketing
- Quality Assurance Coordinator
- Allocation of resources
- Coordination between offices
- Contract administration

PROFESSIONAL EXPERIENCE:

- Accounting,
- Consumer Law and Legislation,
- Bank Management,
- Personnel Management and Training,
- Financial Advice
- Report Preparation.

NOTES: The General Manager allows the working Directors and support staff to concentrate on technical aspects of contract performance.



NEIL CARMICHAEL

POSITION: Senior Technical Officer

QUALIFICATIONS: Diploma in Irrigation - 2006

PROFESSIONAL ASSOCIATIONS:

Member Irrigation Surveyors and Designers Group:
President 2000 – 2002

FIELDS OF SPECIAL COMPETENCE:

- Whole farm plan designs, including earthworks and farm management systems
- Land layout including channel, dam and pump systems
- Wastewater and drainage systems design
- Community surface drainage
- G.P.S. surveys (baseline to real time kinematics)
- Levee, drain, and pipeline surveys.
- Cadastral and topographic surveying.
- EDM and Total Stations.
- Prepares cadastral plans and field notes, including all Quality Assurance checks and closures.
- GPS surveys

PROFESSIONAL EXPERIENCE:

Engineering and Survey Technician with 21 years experience.



GARY DUNSTONE

POSITION: Senior Technical Officer

QUALIFICATIONS: Associate Diploma Of Civil Engineering
(Loddon/Campaspe College) 1995

FIELDS OF SPECIAL COMPETENCE:

- Cadastral and Topographic Surveying
- EDM and Total Station
- Levee, drain, and pipeline surveys
- Engineering surveying specialising in accurate setout for pipelines, boreholes, buildings, bridgeworks, roadworks and levees
- Hydrographical surveys
- Proficient in CivilCad and AutoCAD (TAFE AutoCAD Certificate)
- Prepares cadastral plans including all Quality Assurance Checks and closures to the satisfaction of State Regulations and requirements
- G.P.S. surveys

PROFESSIONAL EXPERIENCE:

1998 - Present

Senior Technical Surveyor with 12 years experience, Price Merrett Consulting PTY LTD

1996 – 1998

Survey Assistant, Price Merrett Consulting PTY LTD



ANDREW MERRETT

POSITION: Graduate Surveyor

QUALIFICATIONS: Bachelor Geomatic Engineering (Honours)
Bachelor of Planning & Design (Property & Construction)

PROFESSIONAL ASSOCIATIONS:

- Graduate Member of Institution of Surveyors, Australia.

FIELDS OF SPECIAL COMPETENCE:

- Cadastral surveying under relevant Australian Acts of Parliament.
- Geodetic Surveying
- Town Planning.
- Engineering surveying specialising in accurate setout for pipelines, boreholes, buildings, bridgeworks, roadworks and levees.
- Implementation of Quality Assurance Procedure
- Plan preparation to the satisfaction of State Regulations and requirements

PROFESSIONAL EXPERIENCE:

2006 – Present: Graduate Surveyor with Price Merrett Consulting. Started a Professional Training Agreement with Philip Price in 2007 to become a Licensed Surveyor.

2003 – 2005: Part time Surveyor at Hellier McFarlane Pty Ltd.

1998 - 2002: Part time Assistant Surveyor with Price Merrett Consulting.



PROJECTS

Cadastral and Subdivision Development

- ✚ **Murray Downs Golf and Country Club** Detail survey and subdivision. Detail survey of 800ha for the design of a 36 hole golf course, clubhouse, facilities, future school and large residential areas. Design subdivision of above.
- ✚ **Cluster Subdivision** Town planning, design and subdivision of a forty-five lot on the outskirts of Kerang. Includes negotiations with the State Electricity Commission, Rural Water Commission, VicRoads, Borough Council and Titles Office. Design and supervision of piped irrigation supply to all lots.
- ✚ **Murray Irrigation Limited** Easements for drainage lines on Box Creek, 160 kilometres of drain requiring title re – establishments, pegging and connection to AMG / ISG
- ✚ **Tower Hill** site at Swan Hill. Detail Survey for 1500 Lot subdivision and residential development for the Urban & Regional Land Corporation for Provision of Planning advice and survey and preparation of subdivisional plans for staged development.

Irrigation (Survey and Design):

- ✚ **Lower Murray Irrigation** topographic surveys and designs for 4200 hectares of intense dairy farming on the reclaimed swamps around Murray Bridge (SA). Public meetings, one on one farmer consultation, preliminary, final designs and costings. Consultations with Government and all relative authorities. Preparation and lodgement of farmer applications for Rehabilitation Finance from the Government. Appointed as Project Managers for the re development with a budget of approximately \$16m.
- ✚ **"Tammit Station"**. This 12000ha property near Euston has the potential for 4000ha of irrigation. Surveys have been carried out for both flood and spray irrigation. Stage 1 was the design and installation of several kilometres of channel for an Upton Channel Walker boom spray.
- ✚ **Northern Mallee Pipeline Scheme**. Survey and cross-sections for several stages of the scheme. Over 500 kms surveyed.
- ✚ Numerous small dairy farms in Gippsland, North Western Victoria and the Riverina, including stock water and effluent disposal.
- ✚ Various sprinkler and drip irrigation system designs.
- ✚ **Terrapee Land Holdings Pty Ltd** – Wine Grape Development - 583 ha - Boort. Project Managers, Irrigation design. Engineering design of pumping station and supply channel, soil surveys, Subdivision & Planning advice



- ✚ Survey and design for sewerage farm waste disposal by irrigation for:
 - Maffra Sewerage Authority - irrigation and major storage
 - Bendigo Sewerage Authority (now Coliban Water)
 - Kyneton Sewerage Farm (now Mid-Goulburn Water Board)
 - Kilmore Sewerage Farm (now Coliban Water)
 - Mid-Goulburn Factory, Rochester - farm layout and re-use design.
 - Alexander Sewerage Authority
 - Seymour Sewerage Authority
 - Bonnie Doon Sewerage Authority
 -
- ✚ Soil Surveys, Soil pits surveyed, analysed and various reports for vineyards, olives & vegetables.
- ✚ **Timbercorp Pty. Ltd.** Boort Olive Development. 4000 hectares at Boort. Soil surveys for site selection and irrigation development planning. Topographic surveys. Subsurface Drainage design. Major storage designs. Caravan park design. Surface drainage design. GIS establishment. Preparation of Grove Lot plans for sales purposes.
- ✚ Whole Farm Plans for irrigated and dry land farms in Victoria, NSW and SA. Detailed farm maps covering an area exceeding 100,000 hectares to date.

Engineering (Survey and Design):

Surveys

- ✚ **Bendigo Wastewater Treatment Farm, now Coliban Water.**-Control surveys, design and set out for major reconstruction of lagoons at
- ✚ **Bendigo treatment Plant**- Checked set out of foundations for (\$20 million development).
- ✚ **Murray River Levee Audit, Cobram.**-Survey and Mapping for CMPS & F-. Upgrade existing survey information and add borehole locations, land boundaries and ownership information. Use sub metre accuracy G.P.S.
- ✚ **Balranald and Euston Levee Survey** for Sinclair Knight Merz. Detailed survey on ISG and AHD datum's of existing levees and all features for urban protection levee system around these towns.

Subdivisions

- ✚ **Redgum Subdivision, Kerang** – Project Management including construction supervision of a 50 Lots in Stage 1.
- ✚ **Island Rise, Cohuna** – two stage development, design and supervise construction of pressure and gravity sewer, town and rural water, drainage and roads for 23 Lots. Completed 2007.
- ✚ **Barry Subdivision**, Swan Hill – Survey & design & supervision for 17 Lots fully serviced development.



- ✚ **Murray Downs** – surveys for multi million dollar development. Golf courses, club house, residential and rural subdivisions and irrigation re-development. Design of Body Corporate irrigation system to 560ha.
- ✚ **Golf Links Estate, Kerang** – detailed design and setout for water supply, drainage and roadworks for a 58 lot subdivision.
- ✚ **Cowan Park, Benalla (Mr Trevor Fraser)** – Survey, design, setout and contract administration for water, sewerage, drainage (including retardation basin), and roadworks (including footpaths, kerb & channelling and driveways) for a 80 Lot Residential Subdivision off Cowan Street.
- ✚ **Kent's Subdivision, Swan Hill** – Survey & design for water, sewerage, drainage and roadworks (including footpaths, kerb & channelling and driveways) for a 28 Lot Residential Subdivision off Werrill Street.
- ✚ **Karinie Industrial Estate, Swan Hill (SHRCC)** – Survey & design for water, sewerage, drainage and roadworks (including kerb & channelling) for a 20 Lot Industrial Subdivision off Shepherds Road.
- ✚ **Dickinson's Subdivision, Swan Hill** - Survey & design for water, sewerage, drainage and road works for a 21 Lot Residential Subdivision in Butterworth Street.

Drainage

- ✚ **Iraak & Browns Drainage Schemes Sunraysia Rural Water Authority** – Survey, design and setout for 33 km of pressurised pipelines around Lake Iraak and Colignan (south of Mildura), to cater for up to 120 ML per day flows. Pipelines ranged in size from 80mm diameter to 750mm diameter. Work also entailed the design of approx. 30 pumps and sump pits.
- ✚ **Lower Murray Water & Coliban Water** - Survey and design of various minor water and sewerage reticulation systems in Cohuna, Kerang, Quambatook and Swan Hill. (Using both Lower Murray Water and Coliban Water specifications).
- ✚ **Murray Irrigation Limited** -Design of Neimur and DC2500 drains.
 - Approximately 50 kms with design flow rates up to
 - 240 ML / day. Earthworks and Structures.

OTHER ENGINEERING PROJECTS INCLUDE:

- ✚ **Gannawarra Shire Council** -Bowland's Rd (2.4km Road & Drainage) & Leitchville South Rd (1.5km) Reconst., –, Dec. 1996.
- ✚ **Gannawarra Shire Council** -Lower Loddon Rd (1.1km Road & Drainage) Const., Kerang –, Dec. 1999.
- ✚ **Gannawarra Shire Council** Airport Rd/Garvey Rd (1.5km) Drainage, Kerang –, Apr. 2000.



- ✚ **Gannawarra Shire Council** Kerang Saleyards Truck wash (Drainage/ Effluent Disposal) –July 2000.
- ✚ **Gannawarra Shire Council** Grigg Rd/Main St Intersection Reconst., Koondrook – Mar. 2002.
- ✚ **Gannawarra Shire Council** -Cohuna Caravan Park (Drainage & Carpark) –Nov. 2002.
- ✚ **GrainCorp-** Manangatang Bunker Access Road (Road & Drainage) –May 2002.
- ✚ **Boundary Bend Estate** (Drainage) – Boundary Bend Estate (Olives), Nov. 2002.
- ✚ **Gannawarra Shire Council-** Koondrook /Murrabit Road – Reconstruction, 2003.

Pipeline

- ✚ **Quambatook Township** – Survey and design 5km of water main including creek crossing to township reservoir for Grampians Wimmera Mallee Water Authority. 2003.
- ✚ **Chapman Street Sewer_**– Survey and design urban sewer line for Lower Murray Water.
- ✚ **Normanville Stock and domestic Pipeline for Goulburn Murray Water** (sub contractor to EGIS Consulting Pty. Ltd. Survey 260 kilometres of pipeline for design. Preparation of locality and longitudinal sections. Drafting of design details on both.
- ✚ **Normanville Pipeline Re-design_**– Redesign over 100km of water main for GMW for construction cost savings.
- ✚ **Casey's Weir Pipeline** – review existing pipeline design criteria, develop appropriate criteria for current project and investigate on farm costs.
- ✚ **Grampians Wimmera Mallee Pipeline_**– survey and design 170 kilometres of trunk pipeline from Longrenong Pump Station near Horsham to Lascelles and Waitchie via Warracknabeal and Hopetoun
- ✚ **Woorinen Pipeline Scheme** –Route Selection, landholder consultation, native vegetation consultation, service location and routes survey. Prepare plans and design by others. 65km pipeline serving over 100 rural residential and mainly horticultural customers for GMW.

Natural Resources and Catchment Management

- ✚ **Surveyor in charge of Murray Darling Basin Commission Levee Survey (Barmah to Mulwala).** 120kms of levees and floodplain cross-sections to A.M.G. and A.H.D. Geodetic accuracy control using GPS. Levees and floodplain surveys using total station and GPS techniques. Plans as plastic overlays on 1:16000 orthophotomaps with long and cross-sections.
- ✚ **Drainage catchment review - Sunraysia Salinity Management Plan.** Preparation and integrated database with geographical modelling to enable correlation of water right usage and drainage.
- ✚ **Community Drainage Schemes** - Survey, design and management.



- ✚ **Koondrook - Murrabit Drainage Feasibility Study** - Plan preparation and design work for proposed community drainage scheme covering 13000ha.
- ✚ **NCCMA Levee Audit** – carried out detailed inspections to determine the extent and condition of various floodway levees within the North Central Catchment area.
- ✚ **Tyntynder Flats Levee Study** – Survey and inspection of 35 km of floodway levee west of Swan Hill to determine the extent and condition of the levees. Required Geotechnical Assessment.
- ✚ **Lake Marmal Floodplain Management Plan** - preparation of a Floodplain Management Plan requiring intensive consultation, Hydrological, Hydro geological, Environmental and Archaeological assessments required.
- ✚ **Loddon Waterworks** – Pipelining review existing pipeline design criteria develop appropriate criteria for current project and investigate on farm costs.
- ✚ **South East Natural Resource Management Board** - Irrigation Efficiency project. Develop a methodology for Whole Farm Planning to assist in Decision Making when assessing change in Irrigation Method due to restricted allocations under Water Metering.

Earthworks

- ✚ **Swan Hill Ethanol Plant** – Preliminary site analysis for earthworks design, road drainage, pad and dam design. Upgrading of roads and intersection in area.
- ✚ **Select Harvest Almond Cracking Plant**– Soil analysis, design of site pads, bunkers, roads, drainage. Supervise construction and manage Contractors.
- ✚ **Water Storage Dams** – Various water storage dams for Agribusiness companies in northern Victoria. Volume storage range from 100MI to 600MI.
- ✚ **Bendigo Water Board** - Surveys and designs for sludge pond reconstruction. Construction checks on new treatment plant.
- ✚ **Survey & Design - Kerang Township Strategic Levees** -(Major levee 2 to 3 metres high on north side of town).



TERMS OF ENGAGEMENT

Price Merrett Consulting Pty. Ltd.
A.B.N. 15 073 392 491

Client: -

Date: -

Address: -

Project: -

AGREEMENT: -

These Terms of engagement together with any accompanying document(s) and/ or any related document(s) incorporating these terms of engagement comprise the agreement between the Client and Price Merrett Consulting Pty. Ltd (PMC). Related documents comprising the agreement are referred to herein as attachments.

IT IS AGREED:

1. Performance of Services

PMC shall perform the services described in the attachments (the Services) with due care skill and diligence and in accordance with the standard of performance considered acceptable by the members of the consulting engineering and surveying professions in Australia.

2. Client Brief

The Client shall provide to PMC briefing and all information concerning the Client's requirements for the commission.

3. Payment

The Client agrees to pay PMC the remuneration described in the attachments as payable to PMC for performing the Services (the Payment).

4. Additional Services

The parties hereto may agree to vary add to or delete parts of the work comprising the Services. The provision of the agreement shall apply to all such variations and additions. Work performed by PMC in addition to the Service shall be charged to the Client as provided in the attachments.

5. Escalation

PMC hourly rates and any lump sum fee are reviewable in accordance with the Consumer Price Index applicable where the Services are principally performed unless otherwise provided in the attachments.

6. Invoices

PMC invoices for the Payment shall be payable within 14 days of receipt by the Client. Interest at PMC overdraft rates plus 2% shall accrue on accounts, which are overdue.

7. Unforeseen Circumstances.

PMC shall be entitled to an equitable variation to this agreement and an appropriate adjustment to the Payment where delays events or circumstances beyond the reasonable control of PMC or reasonable anticipation of the parties hereto delay increase or adversely affect performance of Services.

8. Outgoings

The Client shall reimburse PMC outgoings incurred in performing the Services at cost plus 7.5%.

9. Termination

Where the project is finally terminated the Client may terminate this agreement by 10 days notice in writing to PMC. In the case of termination the Client shall pay all moneys owing to PMC plus reasonable costs of early demobilisation.

10. Suspension

Where the Services are suspended or delayed for a period the Client shall compensate PMC for the costs of suspended personnel and expenses incurred during such period subject to a maximum of 10 working days in each period.

11. Limitation of Liability

The liability of PMC to the Client whether in contract or in tort and whether for negligence or otherwise is hereby limited to the total aggregate amount of \$300,000 or re-performance of the services whichever is the lesser. PMC shall in no event be liable to the Client in respect of matters not notified within 12 months form completion of the Services.

12. Consequential Loss and Estimating

PMC shall not in any event be liable to the Client for consequential or indirect financial loss or damage, in respect of any estimate of the time or cost to complete the Project.

13. Insurance

PMC shall have in effect during the currency of this agreement the following insurances:

(a) Public Liability Insurance covering injury to persons and damage to property in an amount not less than \$10,000,000.

(b) Motor Vehicle Third Party Property Damage Insurance in an amount not less than \$5,000,000.

(c) Statutory Workers Compensation Insurance.

14. Contractors and Approvals

PMC shall have no liability in respect of any act omission or negligence of any subconsultant contractor workman supplier or fabricator or other third party involved in the Project.

15 Copyright

Copyright in all drawings, reports, specifications, bills of quantity, calculations and other documents provided by PMC in connection with the project shall remain the property of PMC

16. Subject to clause 17, the Client alone shall have a licence to use the documents referred to in clause 15 for the purpose of completing the project, but the Client shall not use, or make copies of, such documents in connection with any work not included in the Project.

17. If the Client is in breach of any obligation to make payment to PMC, PMC may revoke the licence referred to in clause 16, and the Client shall then cause to be returned to PMC all documents referred to in clause 15, and all copies thereof.

18. Governing Law and Jurisdiction

This agreement shall be construed and governed in accordance with the laws of the State in which the Services are principally performed and the parties hereto submit to the jurisdiction of that same State.

19. This agreement shall be construed and governed in accordance with the laws of the State in which the Services are principally performed and the parties hereto submit to the jurisdiction of that same State.

20. Assignment

PMC may assign this contract to any associated or related company.

Signed for and on behalf of the Client

Signed for and on behalf of PMC

.....

.....

Position.....

Position.....